

COMEUP APE 12

1,200kg Hydraulic Hoist for Mobile Crane



- Internally lubricated for reliable power and an exceptionally long service life
- Compact, hardened and high efficiency gear trains in the drum reduce power loss
- Multi-Disc Brake (MDB) patented and a two way counter-balance valve work together to hold a full load
- The normal lifting capacity is rated at the top layer of wire rope. It always lifts the rated load, no matter what layer of wire rope
- The drum is dimensioned to obtain a minimum D/d ratio of 18:1 with a 5:1 minimum safety factor at the rated load
- The hoist meets the requirement of FEM9.511 (covering rating and classification) and FEM 1001 standard for the calculation of lifting equipment
- Compliance with international standards such as ASME B30.7 and CE Machinery Directive 2006/42/EC

Optional Accessories:

- Cable tensioner
- Wire rope with hook
- Up and Down limit protection device



Telephone: +44 (0)1482 620991

Email: sales@winchsystems.co.uk

Web: www.winchsystems.co.uk



HYDRAULIC HOIST for Mobile Crane Vehicles

APE Series

900 / 1,200 / 1,600 / 1,900 kg lifting capacity

- Internally lubricated for reliable power and an exceptionally long service life
- Compact, hardened and high efficiency gear trains in the drum reduce power loss
- Multi-Disc Brake (MDB) patented and a two way counter-balance valve work together to hold a full load
- The normal lifting capacity is rated at the top layer of wire rope. It always lifts the rated load, no matter what layer of wire rope
- The drum is dimensioned to obtain a minimum D/d ratio of 18:1 with a 5:1 minimum safety factor at the rated load
- The hoist meets the requirement of FEM9.511 (covering rating and classification) and FEM 1001 standard for the calculation of lifting equipment
- Compliance with international standards such as ASME B30.7 and CE Machinery Directive 2006/42/EC



Telephone: +44 (0)1482 620991
Email: sales@winchsystems.co.uk
Web: www.winchsystems.co.uk

Specification/Part Numbers

- Part number: PN 681910
- Rated line lift: 1,200 kg (2,640 lb) single line at the top layer of rope
- Line speed: 35.5 mpm / 116 fpm single line at the top layer of rope
- Motor: 194.6 cm3/rev (11.9 in3/rev)
- Operation pressure: 150 bar (2,176 psi)with maximum back pressure on return line of 5 bar
- Max-Min pump flow: 40 - 20 l/min (10.6 - 5.3 g/min)
- Gear ratio: 1-stage planetary 5:1
- Brake: Multi-Disc Brake (MDB) patented and counter-balance valve together
- Winch construction: steel housings with steel drum
- Winch Rotation: counter clockwise rotation of the drum
- Drum size (dxDxL): 205 x 305 x 191 mm (8.1" x 12.0" x 7.5")
- Recommended wire rope:
10 mm x 55 m with 1,960 N/mm2 grade with minimum breaking strength of 69.8 kN for EN 14492-2 rating
3/8" x 180 ft with EIPS grade with minimum breaking strength of 15,663 lbf for ASME 30.7 rating
- Mounting bolt pattern: 200 x 170 mm (7.9" x 6.7")
- Hoist weight: 64 kg / 141 lb
- Gross weight: 81 kg / 179 lb
- Box dimension: 550 x 440 x 570 mm (21.7" x 17.3" x 22.4")

Performance Data:

Line Lift and Rope Capacity			
Layer of Wire Rope	Lift by layer, kg / lb	Total Rope on the Drum, m / ft	Line Speed, mpm / fpm
1 st	1,535 / 3,384	12.2 / 40	27.8 / 91
2 nd	1,404 / 3,094	25.6 / 84	30.4 / 100
3 rd	1,294 / 2,853	40 / 131	33 / 108
4 th	1,200 / 2,645	55 / 180	35.5 / 116

Warning

Winches are not to be used for the lifting or moving of persons.
The rated line pull shown is based on the first layer of rope on the drum.
The rope winding on the drum shall remain 5 wraps from the drum.

Warranty

Each new winch is guaranteed against defects in workmanship and material defects
for a period of twelve months from date of purchase



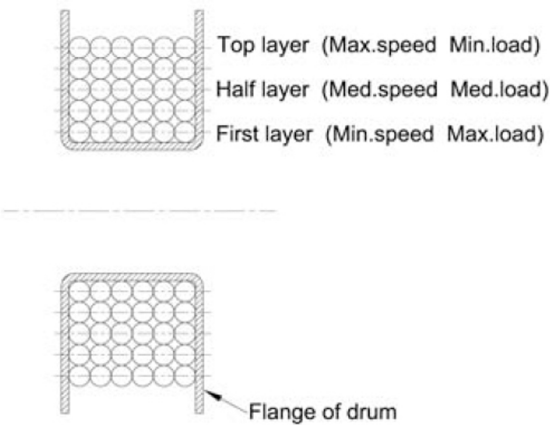
Telephone: +44 (0)1482 620991
Email: sales@winchsystems.co.uk
Web: www.winchsystems.co.uk

Load Rated:

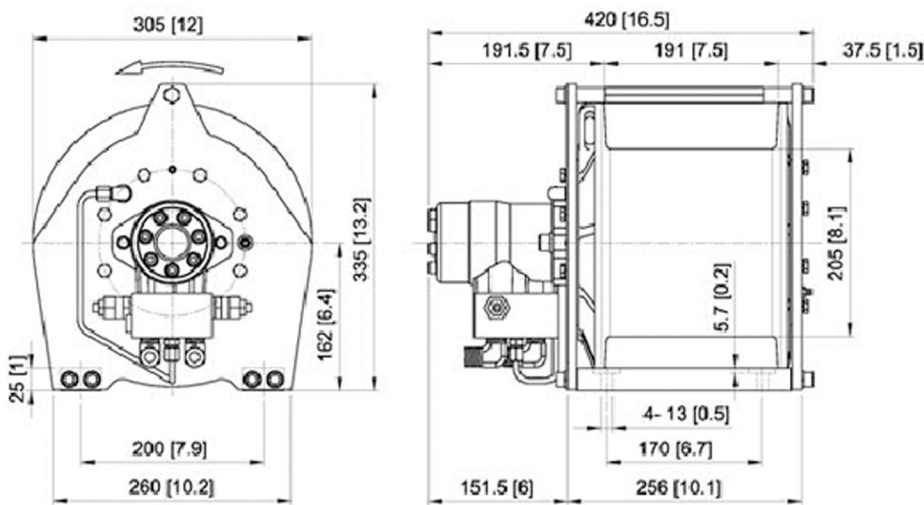
Load and speed vary according to how much wire rope is on the drum. The first layer of rope on the drum delivers the slowest speed The total rope on the drum may vary from figures stated elsewhere and the maximum load. A full drum delivers the maximum speed and the minimum load. For this reason, all hydraulic hoisting winches are rated at their top layer of wire rope on the drum

Leave two free layers below the top of the drum flanges to meet European lifting rules

Leave a minimum of ½ inch (13 mm) below the tope of the drum flange to meet ASME 30.7



Dimensions, mm/in:



Telephone: +44 (0)1482 620991
Email: sales@winchsystems.co.uk
Web: www.winchsystems.co.uk