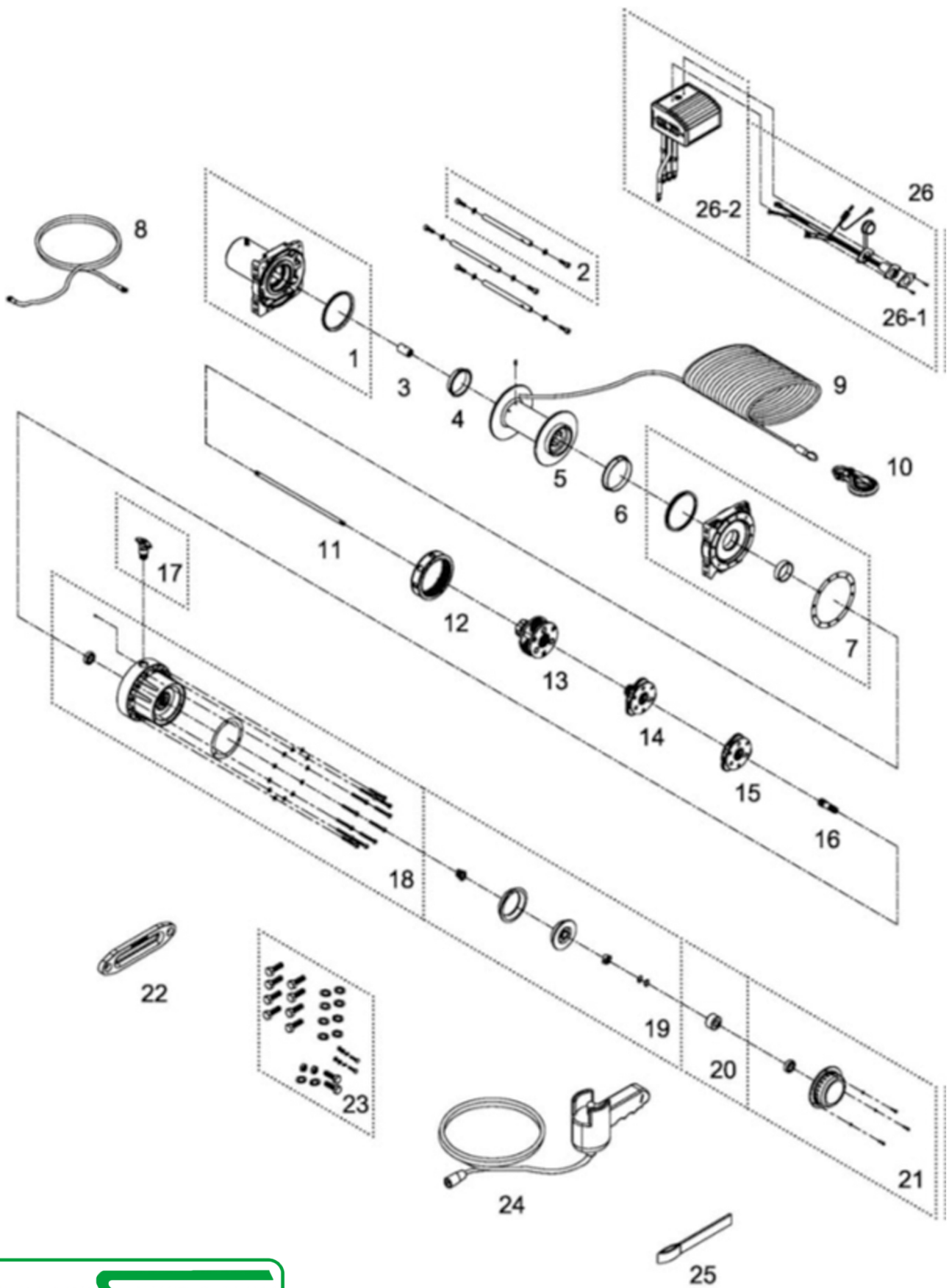


Item	Part No.	Description	Q'ty	Price
1	882883	Waterproof motor w/housing 12V	1	
	882884	Waterproof motor w/housing 24V	1	
2	882856	Tie bar kit	3	
3	882201	Motor coupling kit	1	
4	880048	Drum bushing	1	
5	882202	Drum kit	1	
6	882204	Drum bushing	1	
7	882900	Gearbox support rack kit	1	
8	880009	Grounding lead	1	
9	883325	Synthetic rope, 12 mm x 25m	1	
10	882477	Sling hook 8-10	1	
11	882206	1st shaft	1	
12	882208	3rd ring gear kit	1	
13	882901	3rd stage carrier kit	1	
14	882211	2nd stage carrier	1	
15	882212	1st stage carrier	1	
16	882213	1st pinion	1	
17	882214	Clutch kit	1	
18	882215	Gear box kit	1	
19	882216	Cone brake disc kit	1	
20	882217	Brake clutch base	1	
21	882423	Brake cover kit	1	
22	881061	Hawse fairlead; 184 mm throat	1	
23	882371	Mounting hardware	1	
24	880126	Remote control	1	
25	880026	Handsaver strap	1	
26	881164	Detachable control box 12V	1	
	881165	Detachable control box 24V	1	
26-1	881373	Remote socket kit 12V	1	
	881374	Remote socket kit 24V	1	
26-2	881400	Detachable control pack 12V	1	
	881401	Detachable control pack 24V	1	





Telephone: +44 (0)1482 620991
 Email: sales@winchsystems.co.uk
 Web: www.winchsystems.co.uk